

Eden Church Office Hours

Monday – Friday 8:00 a.m. – noon

Phone: 620-345-8320; **Email:** edenoffice@edenmennonite.org

Check out our website at www.edenmennonite.org

Friend us on Facebook

Lead Pastor, Derek King

Cell Phone: 717-201-1147

dking@edenmennonite.org; Day off: Friday

Associate Pastor, Dianne Schmidt

Cell phone: 419-890-8327

dschmidt@edenmennonite.org; Day off: Thursday

Our Vision: *A people transformed by the Holy Spirit in worship and service, so that through us God's grace, love, and peace are made known to the world.*

Our Mission: *To be a community that follows Jesus in all we say and do.*

The Junior Department Sunday school offering will go to MCC from now through the spring quarter.

Please join one of our Sunday school classes today.

Adult Sunday School

SEEDS: Rm 127 (college+)

Cornerstone: Rm 130 (age 40+)

Christian Homebuilders: Rm 147 (age 50+)

Mixed Seniors' Class: Rm 151

All classes welcome guests, regardless of age

Junior Department Sunday School

All children (age 2-grade 6) head to room 103 for Kids Choir for the first 10 minutes.

After Kids Choir, the classes are in the following rooms:

2-3 year olds: Rm 119

Pre-K, K: Rm 121

1st: Rm 104

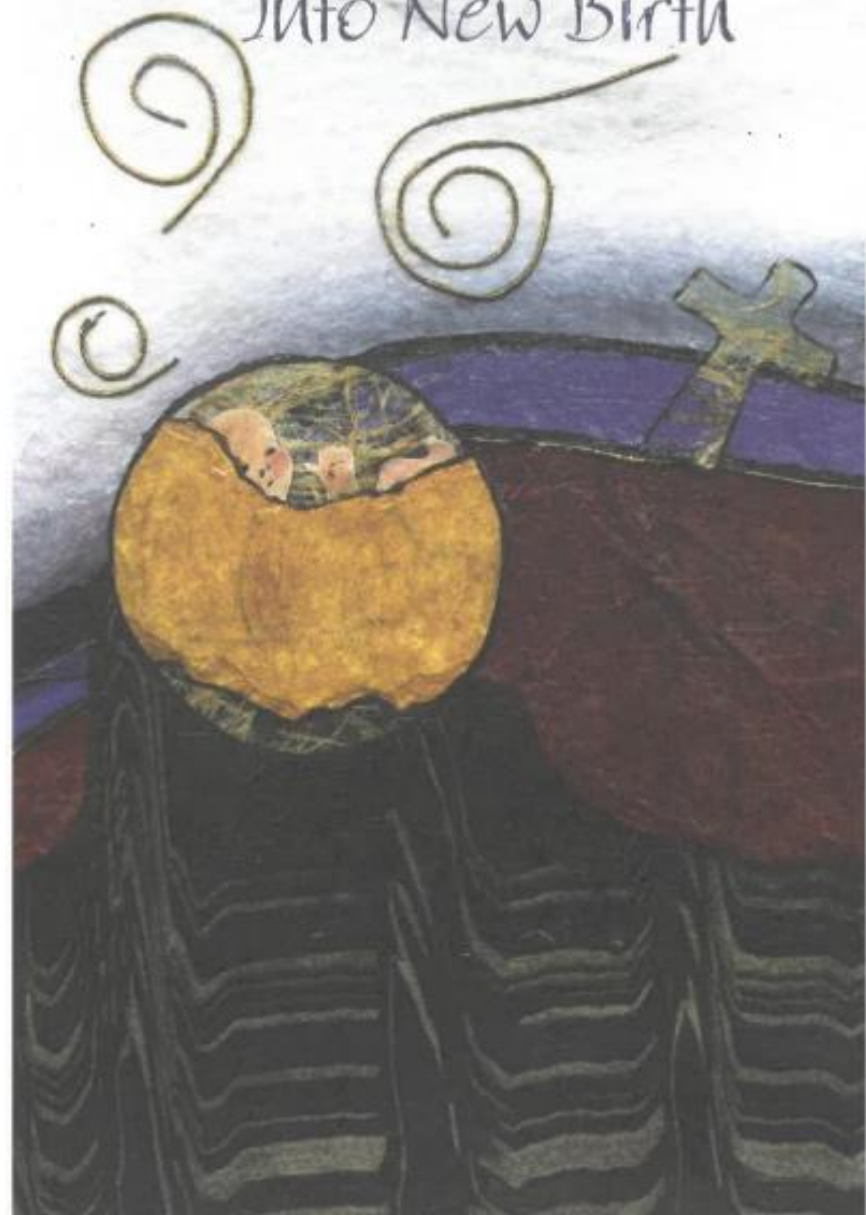
2nd - 4th: Rm 102

5th - 6th: Rm 152

Jr & Sr High (7th - 12th): Rm 100

Nursery provided for those under 2

Into New Birth



Eden Mennonite Church
Moundridge, Kansas
Website:www.edenmennonite.org

Derek King, Lead Pastor

Dianne Schmidt, Associate Pastor

Vol. 65

March 8, 2020

No. 10

Lent 2

Prelude

Robin Schrag

Welcome

Pastor Derek

***Call to Worship**

Leader: We lift up our eyes looking for help.

**People: Our help comes from the Lord
who made heaven and earth.**

Leader: When we have troubles and difficulties,
where does our help come from?

**People: Our help comes from the Lord
who made heaven and earth.**

Leader: When we are invited into new ways of thinking and being,
where does our help come from?

**People: Our help comes from the Lord
who made heaven and earth.**

**Let us worship the One who faithfully helps us
and never leaves us or forsakes us.**

***Opening Song HWB 102**

To God be the Glory

Worship Music

Psalm of Quietness, arr by Jack Schrader

Chancel Choir

Becky Setser, director; Robin Schrag, accompanist

Time with Children

Kristeen Thompson

Lament and Confession (Insert)

O Lord My God, by John L Bell

Biblical Storytelling

John 3:1-17

Message

"Invitation Into New Life"

Pastor Dianne

***Song of Response STS 39**

Will You Come and Follow Me

Sharing Joys and Concerns

Prayers of the People

Offering/Offertory

Please give your coins to the children for "My Coins Count" for MCC

Opportunities for Discipleship

***Sending Song HWB 299** (v.1, 3)

New Earth, Heavens New

***Benediction**

Postlude

*Please stand if you are able

HWB: *Hymnal A Worship Book* (blue);

STJ: *Sing the Journey* (green); **STS:** *Sing the Story* (purple)

All sermons and Scripture can be viewed

at www.edenmennonite.org and our Facebook page, or YouTube channel.

Welcome to worship! May you be blessed, and be a blessing to others, during our time together here and in the coming days.



A nursery is available for small children. Please ask an usher to direct you. Thank you to Carina and Brent Knight for caring for the children in the nursery this a.m.

The peace lamp is lit as a reminder that we should be in prayer for an end to violence in the world. We trust in the power of prayer, as we know that through prayer, all things are possible.



The endowment committee will be accepting grant requests until today, March 8th. Applications are on the information stand.

The Mary Martha Circle still needs your recipes. They have four months before their summer break. You can place recipes in Mary Ann Waltner's mailbox.

The Trustees have scheduled April 4 as a workday at the church. We will be working on the following items:

- New window sash installation
- Clean windows
- General cleaning throughout the church and grounds
- Fill in dirt around grave markers where needed
- Inspect & adjust moveable wall system
- Repair and paint Church rural signage

All are invited to the fellowship meal on Wednesday, March 11 in the fellowship hall beginning at 6:00 p.m. The menu includes sloppy joes, chips, fruit cocktail and dirt cake.

Eden This Week

- Sunday:** 9:30 a.m. Worship
10:30 a.m. Fellowship time
10:40 a.m. Sunday school for all ages
- Tuesday:** 7:00 p.m. Worship Commission
- Wednesday:** 6:00 p.m. Fellowship meal served in fellowship hall
6:45 p.m. Last Wednesday evening Bible study for all ages
6:45 p.m. FEWZ at Eden
7:30 p.m. Ladies Chorus
8:00 p.m. Chancel Choir
- Thursday:** 7:00 p.m. Edu./Disc. Commission mtg.

Looking Ahead

- March 15:** 6:30 p.m. Game night at Pine Village Wellness Center
- March 16:** 7:00 p.m. ELT mtg
- March 19:** Noon – Deadline for Eden Echoes Items
- March 18 & 25:** 6:45 p.m. FEWZ at Eden
7:30 p.m. Ladies Chorus
8:00 p.m. Chancel Choir
- April 1:** 7:30 p.m. Ladies Chorus
8:00 p.m. Chancel Choir
- April 4:** Church Workday
- April 5 & 6:** Palm Sunday
7:00 p.m. Holy Week Services at First Mennonite of Christian
- April 7:** 6:00 p.m. Deacons/Pastors mtg.

Last Sunday, March 1, 2020

Worship Attendance: 171

Sunday School: 147

Offering: 5385.00

Next Sunday, March 15, 2020

Scripture: John 4:5-42

Children's Story: Kylie Goering

Music: Pine Village Senior Singers

Nursery: Samantha & Heath Doane

Remember in Prayer

Shriley Delk having rotator cuff surgery on March 9 in Newton

WDC: Pray for special speaker Patty Shelly and women who gather for the Western District Women in Mission Spring supper this Thursday evening at Faith Mennonite Church.

May Juhnke (101) passed away on March 1, 2020. Services were held at Eden on Friday, March 6. We extend our sympathy to her sons Jerry (DeDe), and Tom (Diane).

The Deacon Commission would like to invite all adults to an informational meeting on Sunday, March 29 during the Sunday school hour. During this time we will be looking at our newly established *Policy to Care for Survivors of Sexual Abuse and Sexual Offenders* approved by the ELT. The pastors will provide the background and overview of the policy along with time for questions and discussion around tables. Printed copies of this policy will be available on March 22 and will also be emailed out to those on the email list.

Another opportunity to aid a refugee baby! Once again, we can shower love, acceptance and welcome upon a refugee family. Zaina Kitambala and her husband are expecting a baby girl in the near future. Her husband is hoping to join her soon in Wichita. Providing for this family to help nurture this new baby is one small way we can help. **We will be having a baby/grocery shower on March 15** to welcome this family. We are asking for donations of baby items and groceries. Our commission provides the family with a car seat and gift card so they can purchase a crib. Diapers, toys, clothes, blankets, wipes, etc., and grocery items are all welcome. We will collect these items on March 8. Thank you again for your help in welcoming this refugee family! Peace Witness Commission: Mark Stucky, Jean Regier, Kirby Goering, Ken Preheim and Shirley Delk.

Eden Mennonite Men: Suggested dues of \$100 can be given to Brandon Kaufman or the church office to cover the Relief Sale's rental of the state fairgrounds. **Please make checks to Eden with Mennonite Men in the memo line.**

Please join us for Game Night at Pine Village Wellness Center on Sunday, March 15. The evening of food, fellowship and fun begins at 6:30 p.m. Bring a favorite snack and/or drink to share, even a friend or two if you wish. All are invited and welcome to join in. We need the older, the younger and the in between. Come to play or visit. The great thing about a game night is the more who gather, the more fun it is for all. For information, contact Bret and Marla Gillmore, Rene and Kristin Kaufman, or Gary and Bonita Howard.

Mobility Worldwide/PET is going on a Guatemala distribution March 30 to April 6, 2020. If anyone would like to help with in country expenses, like distribution of carts, or special projects helping the poor, send checks to Mobility Worldwide, 320 Ruth St. Moundridge. – Kirby and Chris

As part of their care-giving role, the pastors and deacons are visiting members and attenders of the congregation as they are able. They are available to make visits upon request as well. If you could use a visit, please don't hesitate to call either of the pastors or the church office.

Extended Church Family

Youth Volunteer Weekend is March 13-14! Registration is open and ready for all youth grades 7-12 to join us for a weekend of music, worship, and service. S'mores included! Full scholarships are available as part of the online registration process at www.campmennoscah.org. Call 620-297-3290 with questions.

Tee shirt contest! Camp Mennoscah is looking for three two-word phrases that represent the important parts of Camp Mennoscah to you. The best combination of phrases will become our camp tee! One (generic) example would be Sing loudly, Play hard, Love God. Send all your amazing phrases to olivia.bartel@campmennoscah.org!

Newton Et Cetera Shop invites area organizations to apply for their annual Local Giving grants! Applications may be downloaded at newtonetceterashop.com and must be submitted by e-mail to localgiving@newtonetceterashop.com by **April 13, 2020**. Multiple grants will be awarded to selected groups by June 2020, in amounts up to \$5,000. For more information, please contact Sara Dick, general manager, Newton Et Cetera Shop, 619 N. Main Street, Newton KS 67114; phone 316-283-9461 or e-mail localgiving@newtonetceterashop.com.

Dr. James Juhnke will be the speaker at the **March 8 annual meeting of the Swiss Mennonite Cultural and Historical Association held at 2:30 p.m.** in the Fellowship Hall at Bethel College Mennonite Church. "Mennonite Museum in Uzbekistan" is the title of the presentation. He will tell about the history of the Mennonite community that lived for fifty years near the city of Khiva, and how that community is now celebrated in a new museum in Khiva. Refreshments will be served. No reservations are needed.

All women are invited to the **Western District Women in Mission Spring Supper on Thursday, March 12 at Faith Mennonite Church, Newton, KS.** The meal starts at 6 pm with the program at 7 pm. Our Special Guest Speaker, Patty Shelly, Professor of Bible and Religion at Bethel College, will present "My Journey through Scripture". Reservations required by calling Darlene @ 316-323-9762 or emailing westerndistrictwomen@gmail.com. Cost is \$10 and payable at the door.

Everence will host its popular workshop, ***Make Medicare an easy step***, in North Newton on **Tuesday, Mar. 10** and in Hutchinson on **Thursday, Mar. 12**. Both will begin at 6:30 p.m. Attendees will learn about the various Medicare plans and what they cover; plans that supplement Medicare; and enrollment details and deadlines. The workshop is free, but space is limited! Reserve your spot by contacting Michelle Ramer at 316-283-3800 or michelle.ramer@everence.com.

Final week to view “City of Hope: Resurrection City and the 1968 Poor People’s Campaign,” a Smithsonian traveling exhibit at Kauffman Museum through March 15; hours Tues.-Fri., 9:30 a.m.-4:30 p.m., Sat.-Sun. 1:30-4:30 p.m.

Mon., March 9-Fri., March 13 (one week only) – “Secrets of an Inner World,” miniature painting by Ayesha Durrani, Regier Art Gallery in Luyken Fine Arts Center at Bethel College; weekday hours 9 a.m.-5 p.m.

Tues., March 10 – artist talk by Ayesha Durrani, followed by a reception for “Secrets of an Inner World,” 7 p.m., Administration Building chapel and Regier Art Gallery in Luyken Fine Arts Center at Bethel College

Thurs., March 12, Fri., March 13, Sat., March 14 – Bethel College spring musical: *The Theory of Relativity* by Neil Bartram and Brian Hill, 7:30 p.m., Krehbiel Auditorium in Luyken Fine Arts Center; tickets in Thresher Shop in Schultz Student Center, weekdays 8 a.m.-5 p.m., or at the door, subject to availability. *Content warning: rated PG-13 for adult themes and language.*

The 7th Annual Benefit Day Pulled Pork and Baby Back Ribs Dinner will be Saturday, March 28th from 5-6:30 p.m. in the Pine Village Wellness Center. Friends and family are welcome to come enjoy, tender, smoked pulled pork and fall off the bone baby back ribs. You’re not going to want to miss this! Baby back ribs by the rack and pulled pork by the pound are also available for pre-order. All pre-orders are due by March 18th and all orders can be picked up the day of the BBQ. Pre-order forms are available online at www.pinevillageks.org . So bring your appetite, as we kick off our 2020 Benefit Season!

Thousands of Volunteers are needed for the Kansas Mennonite Relief Sale to be a success April 17 & 18, 2020. Sign up to help make New Year’s Cookies; Service or Wait Tables at Feeding of the Multitude; Sell Plants & Things; Serve Venenike and Sausage in Domestic Arts. Check with Dennis & Teresa Graber where the need is and how to sign up. Also, sign up to volunteer online at www.kansas.mccsale.org/volunteer

Mennonite Disaster Service is hard at work in Texas, Florida and many other places. To see where you can volunteer with MDS go to <https://mds.volunteermatrix.com/>

Get ready for the Kansas Mennonite Relief Sale on April 17 & 18, 2020 at the Kansas State Fairgrounds in Hutchinson. What can you bring as your gift to the hungry and hurting at home and abroad? Quality woodwork and needlework items, cotton tea towels, hobby items, crafts, plants and baked foods are much in demand. Donate items for the General, Silent and Children's Auctions. We call upon quilters to complete their quilts and to gather extra supplies to donate to Quilters' Corner. Begin to divide house plants and start vegetable plants to sell at Plants & Things and tea towel sets for Kansas Crafts. Participate in the Run for Relief, a 5K run/walk, the Saturday of the sale and gather pledges. Stay up-to-date on all things relating to Kansas Mennonite Relief Sale by liking us on Facebook at Kansas Mennonite Relief Sale or our website at www.kansas.mccsale.org If you have pictures of items you are donating, send to photos@kansas.mccsale.org to items can be advertised online.

Service Opportunities at KMRS: The Kansas Mennonite Relief Sale invites you to join our family. There is a variety of committee openings including an Urgent Need for a Treasurer; Domestic Arts Verenike Booth Committee Members; Feeding the Multitude Sausage Baking Chair on Saturday; Verenike Frying Chair on Friday; and New Year's Cookie committee. See Dennis & Teresa Graber for details on these opportunities.

***PeaceMail* is Mennonite Church USA's weekly e-newsletter** with all our news and blogs compiled in one place. [Subscribe here.](#)

Please join MCC Central States in our first **Young Adult Immigration Learning Tour. May 25-29th**, MCC invites young adults to South Texas to raise awareness about the increasing migrant deaths, militarization, environment degradation, effects on habitat and effects on sister communities near the border wall along the Mexico/U.S. border. Participants will increase their understanding and knowledge of the social, economic, political and biblical/theological significance of migration in border communities, including advocacy tools and capacity building to engage others on borderlands and migration issues. Some grants may be available to interested participants with financial need. For registration or to inquire about a grant, please contact Abby Endashaw, 720-500-3413, abbyendashaw@mcc.org. Final Registration Deadline April 1, 2020.

O LORD MY GOD

Based on Psalms 10 and 88
John L. Bell and Graham Maule

Tune: O LORD MY GOD
John L. Bell



Copyright © 1988 Wild Goose Resource Group, Iona Community
GIA Publications, Inc., exclusive North American Agent. All Rights Reserved
