

Eden Church Office Hours

Monday – Friday 8:00 a.m. – noon

Phone: 620-345-8320; **Email:** edenoffice@edenmennonite.org

Check out our website at www.edenmennonite.org

Friend us on Facebook

Lead Pastor, Derek King

Cell Phone: 717-201-1147

dking@edenmennonite.org; Day off: Friday

Associate Pastor, Dianne Schmidt

Cell phone: 419-890-8327

dschmidt@edenmennonite.org; Day off: Thursday

Our Vision: *A people transformed by the Holy Spirit in worship and service, so that through us God's grace, love, and peace are made known to the world.*

Our Mission: *To be a community that follows Jesus in all we say and do.*

Please join one of our Sunday school classes today.

Adult Sunday School

College Age: Rm 102

SEEDS: Rm 127 (age 20+)

Cornerstone: Rm 130 (age 40+)

Christian Homebuilders: Rm 147 (age 50+)

Ladies' Class: Rm 151

Men's Class: Rm 129

All classes welcome guests, regardless of age

Junior Department Sunday School

All children (age 2-grade 6) head to room 103 for Kids Choir for the first 10 minutes.

After Kids Choir, the classes are in the following rooms:

2-3 year olds: Rm 119

Pre-K, K: Rm 121

1st – 3rd: Rm 104

4th - 6th: Rm 152

Jr & Sr High (7th - 12th): Rm 100

Nursery provided for those under 2

A vibrant blue and black butterfly with white spots on its wings, perched on a green leaf. The butterfly is the central focus, with its wings spread, showing a striking contrast between the deep blue and black. The background is a lush green, slightly blurred, suggesting a natural outdoor setting.

**I AM DOING A
NEW THING!**

I S A I A H 4 3 : 1 9

**Eden Mennonite Church
Moundridge, Kansas
Website: www.edenmennonite.org**

Derek King, Lead Pastor

Dianne Schmidt, Associate Pastor

Vol. 64

April 7, 2019

No. 14

Season of Lent: *Blessed Hunger, Holy Feast*

When we are exhausted, God makes a way through mighty waters. We move forward in hope as God does a new thing.

Prelude

Jill Zerger

Welcome

Pastor Derek

***Call to Worship**

Leader: O God, you are our God. We seek you.

People: Our souls thirst for you as in a dry and weary land where there is no water.

Leader: The Lord does great things for us and we rejoice!

People: The Lord restores our fortunes, and we shout for joy.

All: O God, you satisfy our souls as with a rich feast. In the shadow of your wings, we sing for joy, and you uphold us.

Worship Music

Men's Chorus

God of Grace and God of Glory, arr. by J Harold Moyer
Becky Setser, director; Bonita Howard, accompanist

Time with Children

"Celebrate Well"

Jean Regier, Gentry & Mason Regier

Scripture Reading

Isaiah 43:16-21

Confession

**When we are hungry, thirsty, and totally worn out,
God gives us what we need.**

Also, God is doing something new. It springs forth.

We get to be part of this new thing.

New hope, new relationships, new creation, new life!

We will follow the new path that God has created.

Worship Music

I Then Shall Live, arranged by Lari Goss

Men's Chorus

Message

"What's God up to?"

Pastor Dianne

***Song of Response**

Beautiful Things

Jenny Schrag, guitar; Kristin Kaufman & Morgan Kaufman, vocals

Confession

All: God of hope, give us eyes to see the new work you are doing among us. When we struggle to discern what lies ahead, let us see your new work.

L: When our circumstance appear to hold no hope...we will see the new work of God. When our souls hunger for your presence...we will see the new work of God

All: In the morning and in the evening, we will see the new work of God.

L: Our generous God provides for us.

Sharing Joys and Concerns

Prayers of the People

Offering/Offertory

Kids collect coins for Kansas Mennonite Relief Sale (please pass coins to aisle)

Opportunities for Discipleship

*Sending Song HWB 99

We Praise Thee, O God

*Benediction

Postlude

*Please stand if you are able

HWB: *Hymnal A Worship Book* (blue);

STJ: *Sing the Journey* (green); **STS:** *Sing the Story* (purple)

All sermons and Scripture can be viewed

at www.edenmennonite.org and our Facebook page, or YouTube channel.

Welcome. Just as many people in the Bible welcomed Jesus into their homes, so he welcomes us here. We too, welcome you to worship.



A nursery is available for small children. Please ask an usher to direct you. Thank you to Kathy and Al Neufeld for caring for children in the nursery this morning.

The peace lamp is lit as a reminder that we should be in prayer for an end to violence in the world. We trust in the power of prayer, as we know that through prayer, all things are possible.



Eden Mennonite Men will be supplying \$8,800 for some of the rental fees for the KS State Fairgrounds for the Kansas Mennonite Relief Sale and covering a variety of other expenses so all sales the day of the sale are profit. The suggested minimum \$100 dues may be taken to the church office or given to Brandon Kaufman. At this time we are currently \$1,380 below our goal.

Eden This Week

Sunday	9:30 a.m. Worship service 10:30 a.m. Fellowship time
Monday	7:00 p.m. ELT mtg. at the church office
Tuesday	5:30 p.m. Deacons/Pastors mtg. 7:00 p.m. Education/Discipleship Commission mtg.
Wednesday	7:30 p.m. Ladies Chorus 8:00 p.m. Chancel Choir

Looking Ahead

April 14:	Palm Sunday 7:00 p.m. Associated Ministries Holy Week Service at Eden
April 17:	All bulletin announcements due in church office by noon 4:30 p.m. Community Prayer Walk 7:30 p.m. Ladies Chorus 8:00 p.m. Chancel Choir
April 18:	6:30 p.m. Maundy Thursday meal and Communion at Eden
April 19:	Good Friday – Eden Church Office closed
April 21:	Easter 6:30 a.m. Sunrise Service followed by light breakfast
April 24:	7:30 p.m. Ladies Chorus 8:00 p.m. Chancel Choir 8:45 p.m. Men's Chorus

Last Sunday, March 31, 2019

Worship: 191
SS: 132
Offering: \$6,353.26

Next Sunday, April 14, 2019

Music: Kid's choir
Children's Story: Pastor Derek
Nursery: Carina & Brent Knight

Remember in Prayer

WDC: Pray for WDC pastors and church members gathering at Camp Mennoscah this week for a retreat on “Who Cares About Climate Change? Pastoral Responses to Denial and Despair.”

Lent Worship Visuals: In Jesus we are washed and made new. Washing stirs hope within us as God does a new thing.

Please bring your non-perishable grocery and/or monetary donations for the Moundridge Food Pantry the first Sunday of the month. Place them in the containers provided in the library and near the front entrance.

Elaine, Greg and Denise Krehbiel and Ronnie Schrag will be participating in this year’s Kansas Mennonite Relief Sale 5k Run and Walk on April 13. We invite sponsors to support MCC by sponsoring us. Checks should be made payable to KMRS with Run/Walk in the memo. Thank you for your support.

The April *Eden Echoes* is available on the information stand in the fellowship hall.

The **Swiss Mennonite Cultural and Historical Association (SMCHA)** is again **offering education financial assistance grants** to individuals preparing for full-time Christian service, Mennonite ministry, Mennonite voluntary service, or other related careers. The maximum grant available is \$1,000 for full-time ministerial students with lesser amounts for part-time students and Mennonite voluntary service participants. The grants are for the 2019-2020 school year. **The application deadline is May 30, 2019.** See the April *Eden Echoes* for more information.

More opportunities to aid with refugee babies! Once again, we can shower love, acceptance and welcome upon our refugee families. Okita and Edja are expecting a baby in early May and Noah and Autumn are expecting in late May. Both families are very concerned with nurturing their babies and are overwhelmed with the planning and support they will need—this is one small way we can help!

We are having a baby/grocery shower on April 28 to welcome these families and are asking for donations of baby items and groceries. Our commission provides the family with a car seat and gift card so they can purchase a crib. Diapers, toys, clothes, blankets, wipes, etc., and grocery items are all welcome. We will collect these items April 14 and 21. Thank you again with your help to welcome these refugees!

Peace and Witness Commission: Mark Stucky, Jean Regier, Kirby Goering, Jerri Kaufman and Ken Preheim

If you were unable to attend the Faith Forum on politics last Sunday, stop by the office and pick up a DVD of the discussion.

Plan to attend one of the Kansas Mennonite Men's Chorus concerts. The first is at 7 p.m., tonight, April 7 at Shari Flaming Center for the Arts (corner of B and Jefferson), Tabor College, Hillsboro. Next week's is at 7 p.m., April 14 at Memorial Hall, Bethel College, North Newton. Offerings go to MCC. Seven Eden men are singing with the chorus during its 51st year. Greg Bontrager is director.

Extended Church Family

Scams, what you need to know: Pine Village will be hosting Denise Groene, the State Director from the Better Business Bureau. Denise will be presenting an informational meeting at the Wellness Center on April 18th at 3:00 p.m. Everyone is welcome. Come learn about the latest scams; particularly those directed towards seniors, understand the red flags of a scam and how to protect your information from Scammers.

All interested singers are invited to join the Bethel College Masterworks presentation of Faure's *Requiem*, Sun., May 5. Rehearsals begin Monday, April 22. For more information, contact William Eash, weash@bethelks.edu, 316-284-5316.

All parents and guardians of children who will be five years old on or before August 31, 2019 are invited to the **Moundridge Elementary School's Kindergarten Screening Day for eligible children on April 8.** Out-of-District families must complete an application form, available at the school. At the screening, MES professionals will assess each child's kindergarten readiness and review immunizations the child may need to enter kindergarten, as well as any developmental concerns parents/guardians may have for their child. The assessments last about one-half hour and are **by appointment only.** Parents/Guardians may call the school office at **(620) 345-5500, ext. 401** to schedule their child's screening time, request Out-of-District applications or to ask any questions related to enrollment and the screening. We're looking forward to meeting your child!!

The next concert of the Prairie Window Concert Series, featuring [Krista Detor](#), will be on Sunday, April 7th at 4 p.m. at the Dyck Arboretum in Hesston. Join us for an evening of great music and good food in a prairie garden setting. Tickets: \$20 adults/\$10 kids, plus tax. [Purchase tickets online](#) or call [620-327-8127](tel:620-327-8127) to reserve your seats.

Sun., April 7 – Bethel College Women's Chorus spring concert, 4 p.m., Bethel College Mennonite Church

Sun., April 7 – Sunday-Afternoon-at-the-Museum: “Down to the Countryside: Perspectives on the Chinese Cultural Revolution,” a panel of Zhuojin Jiang, Jim Goering and Ester Kreider Eash, moderated by Raylene Hinz-Penner, **3 p.m.**, *Kauffman Museum* (in connection with the special exhibit “Campaign for a New China”).

Everence will hold an informative Medicare workshop at its office in Hutchinson at 524 E. 30th Ave. on **Thursday, April 11 (6:30 p.m.)**. Attendees will learn about the various Medicare plans and what they cover; plans that supplement Medicare; and enrollment details and deadlines. Space is limited. Reserve your spot soon by contacting Michelle Ramer at (316) 283-3800; (877) 467-7294 or michelle.ramer@everence.com.

Explore the global issue of fast fashion by watching the documentary film *True Cost* at MCC in North Newton on April 9 at 7 p.m. Directed by Andrew Morgan, the film looks at environmental, social and psychological aspects of consumerism and mass media focused on the global garment industry. Also hear briefly from MCC about how our thrift shop network is working to reduce the harms caused by fast fashion, here and around the world. Light snacks will be provided while you watch the movie. Questions? Contact sarahfleming@mcc.org.

Newton Et Cetera Shop is hiring an **outdoor gear & clerk manager** for 35-40 hours/week. The full job description and application are available at the store (619 N. Main in Newton), via e-mail at generalmanager@newtonetceterashop.com, or at newtonetceterashop.com. **Applications are due Monday, April 15, 2019**, and can be submitted in person to the general manager or by e-mail. Newton Et Cetera Shop is an equal opportunity employer, committed to employment equity. Newton Et Cetera Shop values diversity and encourages all qualified candidates to apply.

Camp Mennoscah

Retirees Retreat at Camp Mennoscah, April 22-24! We can't wait to see retirees of all ages for a time of renewal with sessions on everything from trips to Central America and Ukraine to Reader's Theater and a steel drum concert. There is time to take a break or go for a walk or have coffee and conversation. Singing and Bible studies included! Email office@campmennoscah.org or call 620-297-3290 for a brochure. Register online at campmennoscah.org! Bring friends!

Our first Work & Play Day of the year is April 27. We'll start work projects at 8:30am and end at 2:30pm, just in time for you to spend the rest of the afternoon playing. A simple lunch will be served. Please call us at 620-297-3290 or register online at campmennoscah.org to let us know you're coming! All ages invited; those under 18 must be accompanied by an adult.



Palm Sunday

April 14, 7:00 p.m. at Eden

Join us for community Holy Week services!
Peter Goerzen, Bethel College Campus Pastor and
Instructor of Bible and Religion, will preach on the hope we have through
Jesus' self-emptying on the cross

April 17, 4:30 p.m.

Meet at the Funeral Home parking lot

Join us for a prayer walk.
It's a time to lift up our community before God!

April 18, 6:30 p.m. at Eden

Maundy Thursday Service
Meal and Communion

April 21, 6:30 a.m.

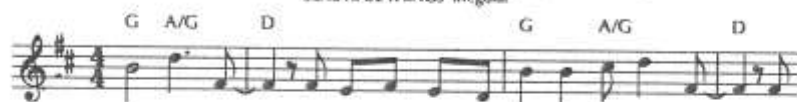
Easter Sunrise Service

at Russ Stucky's pasture 1 mile east of Christian on Buckskin

Please bring your lawn chair, and/or blanket if needed
Light breakfast served at West Zion
(bring rolls or other finger food to share)

All This Pain (Beautiful Things) 1

BEAUTIFUL THINGS Irregular



1 All this pain. I won-der if I'll ev - er find my way; I
 2 All this earth. Could all that is lost ev - er be found;
 3 All a-round hope is spring-ing up from this old ground.



won-der if my life could real-ly change at all. to verse 2
 could a gar-den come up from this ground at all? to refrain
 Out of cha-os, life is be-ing found in you. to refrain



You make beau-ti-ful things, you make beau-ti-ful things out of the dust.



You make beau-ti-ful things, you make beau-ti-ful things out of us. to verse 3
 to bridge



You make me new, you are mak - ing me new.



You make me new, you are mak - ing me new.